



VIRGINIA
RAILWAY
EXPRESS

VRE Alexandria Station and King & Commonwealth Rail Bridges

Rosemont Citizens Association Information Session

May 14, 2026
7:00 PM

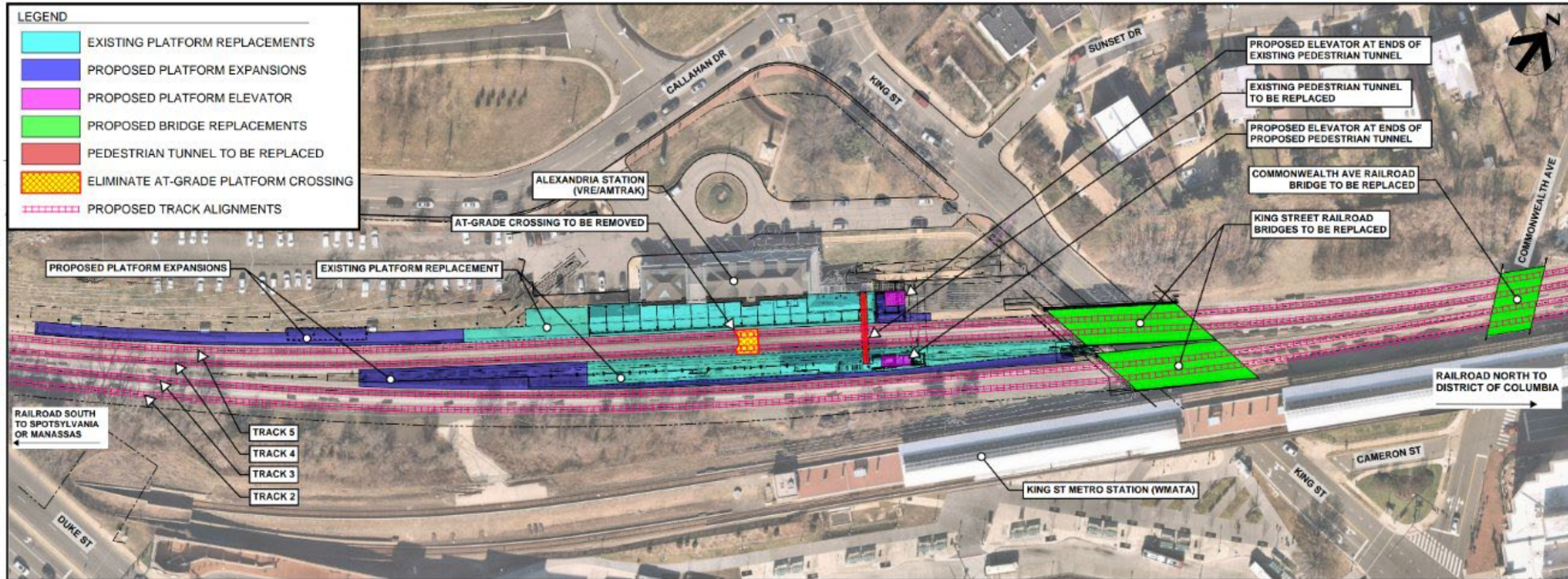


Table of Contents



- 1 Project Background
- 2 Project Benefits
- 3 Project Details
- 4 Key Players
- 5 Major Events
- 6 Community Outreach
- 7 Q&A

Alexandria Station and King Street and Commonwealth Avenue Bridge Replacement Project Overview



Project Benefits



Enhanced Safety

Eliminates at-grade crossings and replaces aging infrastructure.



Improved Accessibility

Replacement of the tunnel, installation of elevators, and raising of the platforms will provide easier boarding and site circulation.



Faster Boarding & Transfers

Longer platforms allow more doors to open, which help reduce boarding times. Adding an additional boarding edge will allow more trains to simultaneously board at the station.



Reduced Maintenance

New bridges and modernized facilities will lower future maintenance needs.



Community Coordination

Work is scheduled to minimize disruption and align with other infrastructure projects in the corridor - VPRA Alexandria Fourth Track Project.

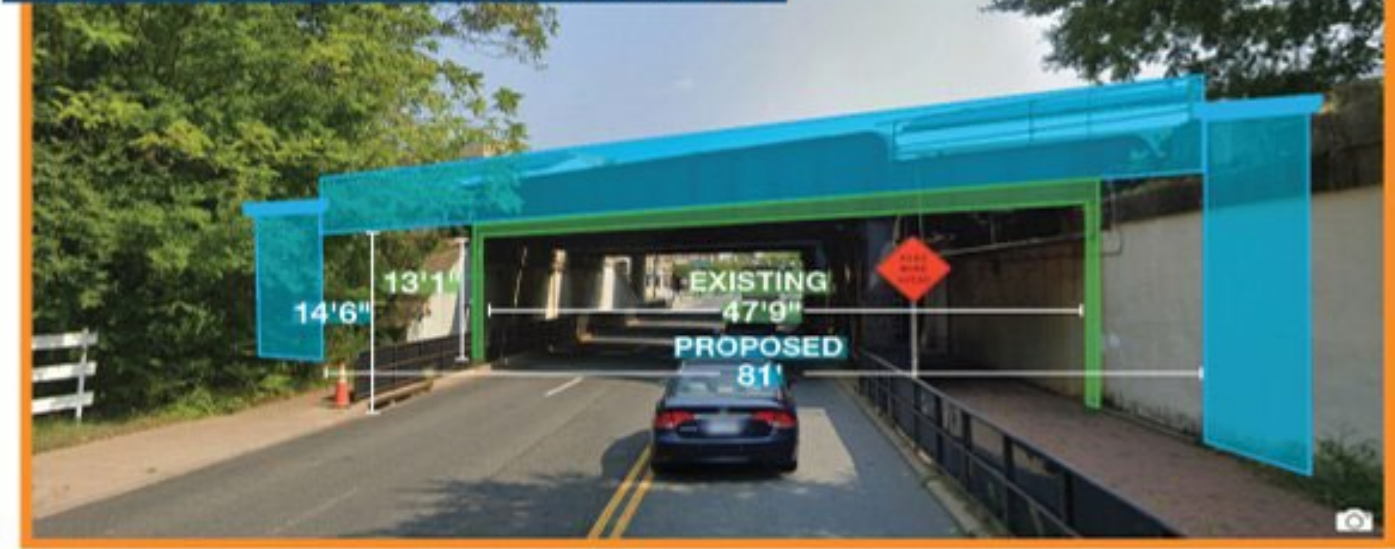


Project Details

COMMONWEALTH AVENUE LOOKING EAST



KING STREET LOOKING EAST



- ◆ VPRA and CSXT designed two new replacement rail bridges to span King Street and Commonwealth Avenue
 - ◆ To be constructed by VRE as part of the Station Improvements project
 - ◆ Will reduce maintenance, minimize service interruptions, and upgrade bridges to meet current standards
 - ◆ Enhances safety for pedestrians and motorists traveling underneath the bridge
- ◆ City of Alexandria Streetscape Project

Key Players



Support of Excavation

- ◆ Sheetpile driving involves driving sheets of metal to temporarily hold back the soil and allow us to build the new bridge foundations



Jump Span Installation

- ◆ The jump spans are temporary bridges supporting the rail which enable us to build the new bridge foundations behind the existing foundations, away from the road.
- ◆ This allows us to separate activities from the public right of way



VIRGINIA
RAILWAY
EXPRESS

City of Alexandria Noise Variance Permit

- ◆ 7am – 11pm Daily:
 - ◆ Allowed to pile drive

- ◆ 11pm – 7am noise mitigation:
 - ◆ Minimize noise generating activities during overnight hours where feasible

 - ◆ Scheduled noise generating activities during the day where feasible

 - ◆ “Shusher” backup alarms on equipment where compliant.



Major Events

Weekend Dates

◆ **COMPLETED** - May 1st - 4th

◆ ~~POSTPONED~~ - May 15th - 18th

◆ Thursday May 28th – Tuesday June 2nd

◆ Start Thursday 6:30pm

◆ King Street reopen Tuesday morning*

◆ Thursday June 11th – Tuesday June 16th

◆ Start Thursday 6:30pm

◆ King Street reopen Tuesday morning*



Traffic Impacts

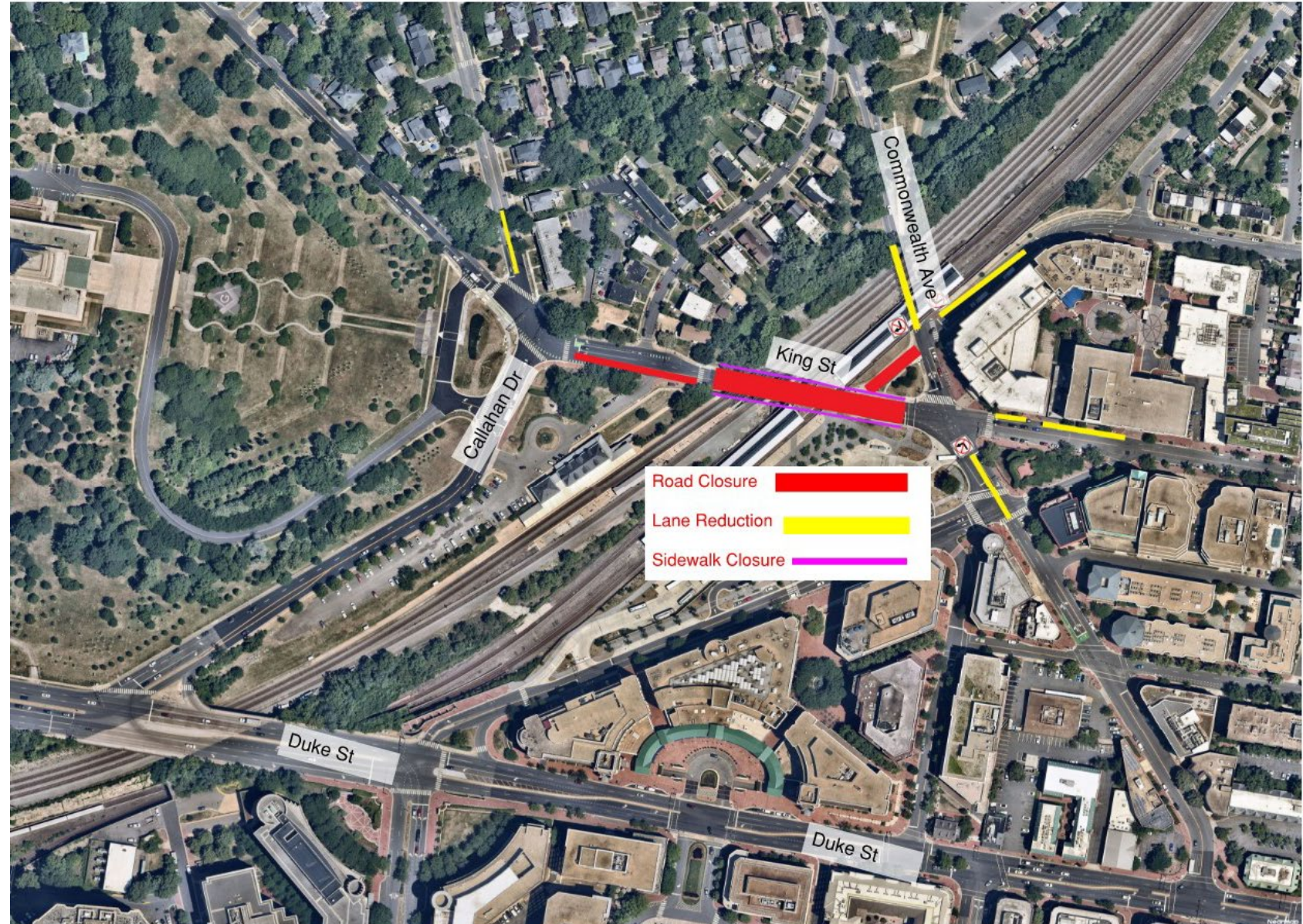
- ◆ Roadway Impacts:
 - King St will be fully closed between Russell Rd and Daingerfield Rd – Traffic detoured to Duke St.
 - ◆ Commonwealth Ave will remain open with single travel lane alternating traffic directed by flaggers
- ◆ Sidewalk Impacts:
 - ◆ Sidewalk connecting King St to the station tunnel is closed – follow detour signage to use the station ramp
 - ◆ Stairs from the center platform to King St **will be closed starting May 26th**

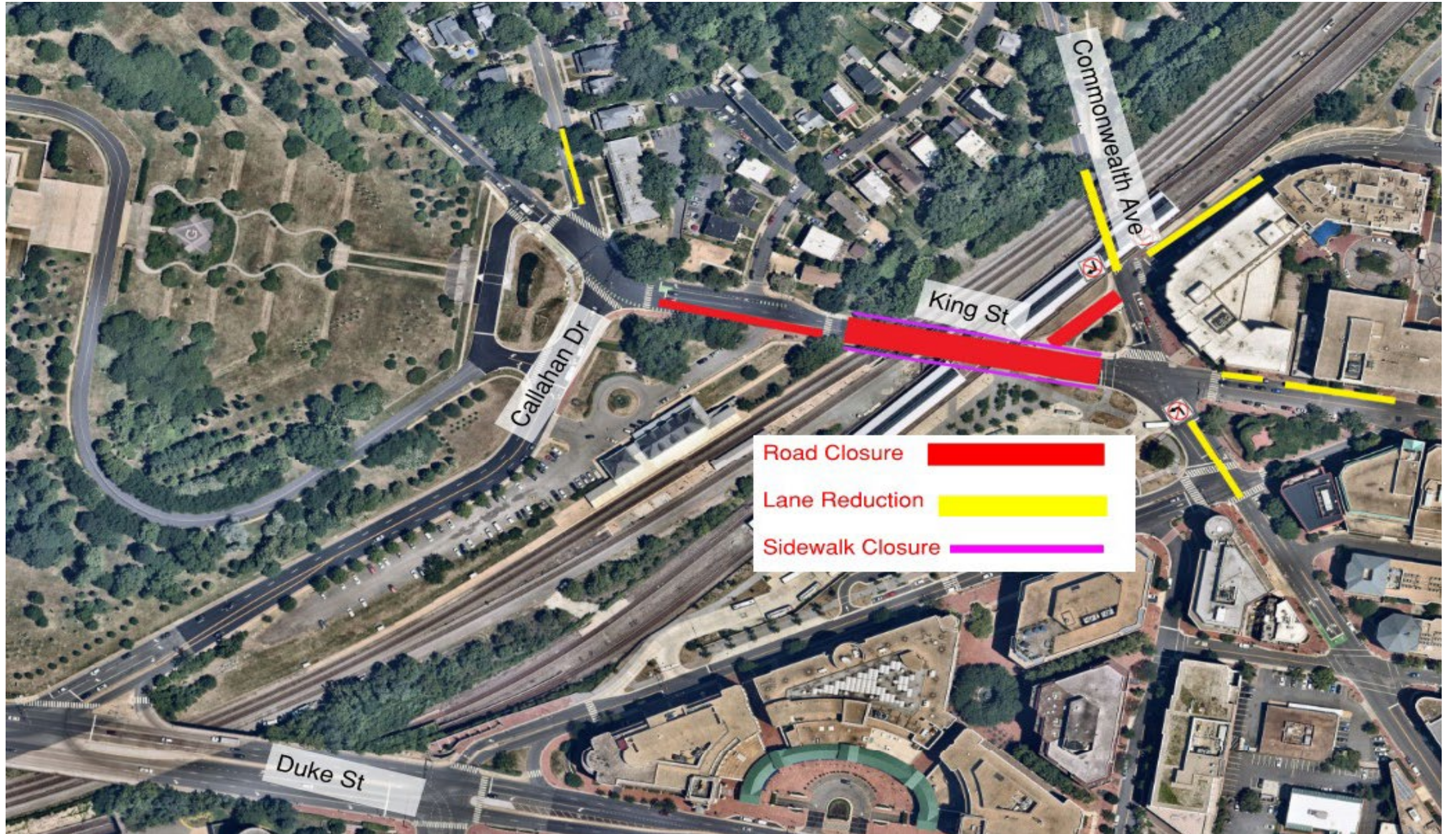


Major Events

Weekend Closures

- ◆ Commonwealth Ave
 - ◆ One lane will remain open carrying alternating traffic directed by flaggers.
- ◆ King St
 - ◆ Fully closed during three weekends for jump span installation





Community Outreach

Project website:

www.vre.org/alexandria-station-project

Project email:

AlexandriaStationImprovements@vre.org

Project newsletters:

- ◆ Posted Quarterly
- ◆ www.vre.org/alexandria-station-project/#Project%20Newsletters



VIRGINIA
RAILWAY
EXPRESS



Questions?





VIRGINIA
RAILWAY
EXPRESS

Thank You!

Together, we're driving progress and building a stronger, more connected future for our community.

1500 King Street, Suite 202, Alexandria,
Virginia 22314



800-743-3873

